

## Marble Imaging starts developing coastal monitoring tool **PCIS** supported by €150,000 grant from BAB – the development bank for Bremen and Bremerhaven



[M] Marble Imaging, Unsplash

30/04/2025

Bremen, Germany

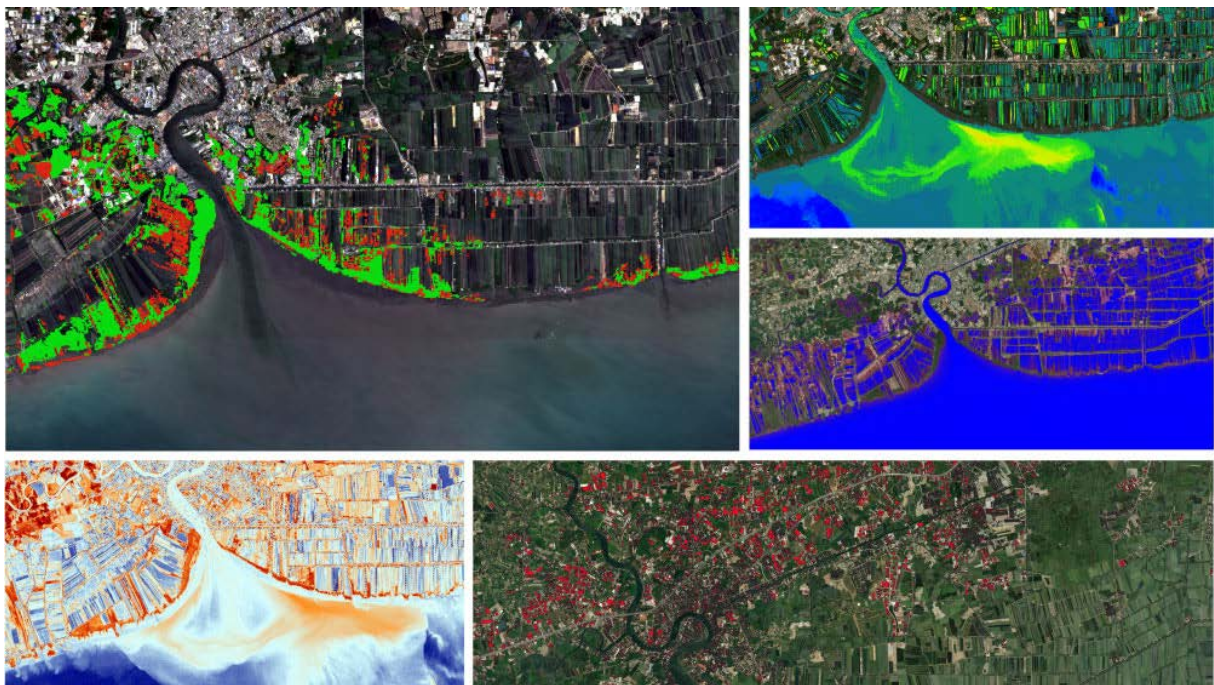
- Marble Imaging officially announces the development of an advanced coastal monitoring solution called "Precious Coast Information System" (**PCIS**) to deliver timely Earth Observation based assessments for coastal regions worldwide.
- The project is co-funded with €150,000 through the Start-up Funding Bremen (BRE-Up) program by Starhaus Bremen & Bremerhaven, a division of BAB – the development bank, and the European Union
- The project, which will run until November 2026, will deliver valuable insights for commercial companies, scientific institutions and political decision-makers interested in the coastal areas of our planet.



Almost one billion people worldwide live near the coast. Climate change and human-driven transformations increasingly endanger these economically vital areas.

With **PCIS** Marble Imaging offers an innovative modular software solution for the sustainable management of our oceans and the protection of the world's coastal regions. The AI-supported Earth Observation (EO) analyses assess the risk of coastal regions and provide valuable and timely insights regarding threats like water pollution, deforestation, erosion, or flooding, all affecting the natural environment, economy, and society.

**PCIS** consists of building blocks of geospatial tools that combine EO data and products, in-house AI based methods and socio-economic datasets to provide holistic information about coastal vulnerability – in an easily understandable way.



Marble analytics offered as building blocks within **PCIS**, with *Sentinel-2* imagery

"With **PCIS**, we will offer an innovative EO based software solution to help monitor, preserve and understand risk affecting our coasts – this is crucial for increasing coastal resilience to climate change impact and for climate change adaptation. In combination with the very high-resolution multispectral data from the Marble satellites **PCIS** will deliver detailed, timely and precise insights", says **Dr. Gopika Suresh, Co-Founder, CSO and Head of Product Development of Marble.**

EO based data and products play a vital role in analyzing coastlines, offering insights that in-situ measurements or drones do not offer: Cost-effective, regular scans of large areas to monitor assets and detect trends.



This data is crucial for government agencies and commercial clients across sectors like environmental monitoring and disaster management.

**Ralf Stapp, Managing Director of BAB:** "We are glad to have these cutting-edge technologies in Bremen. It is important to us to support this innovative solution for detecting and mitigating the effects of climate change."

With the generated insights, Marble Imaging targets various industries vital to the global economy, including tourism, shipping, aquaculture, insurance, infrastructure, construction and real estate development. Together with the Aquaculture site suitability tool developed within the scope of the ESA Kickstart Blue Capital project **AquaMap**, Marble aims to increase coastal resilience and increase food security.

Starting from 2026, Marble plans to have the capability to **integrate very high-resolution data from their own satellites**, giving them a market advantage with more affordable, precise analytics. Until 2028 Marble plans to deploy their own constellation of 20 satellites to offer up to hourly coverage over areas of interest in Europe.

#### **About Marble Imaging:**

Marble Imaging is a big-data EO company based in Germany, building its constellation of VHR satellites to provide daily EO analytics and insights of our planet. The data and derived EO-based analytics will be vital in supporting rapid decision-making with regard to food security, green and sustainable energy transitions, climate change, infrastructure and mobility, global security and much more. Marble already offers advanced data analysis services, including deforestation monitoring, water health assessment, and coastline monitoring.

With their flagship product, Precious Marble, they are developing a product suite dedicated to identifying and analysing the drivers contributing to the vulnerability of the Earth's ecosystem. By seamlessly integrating data on risk, exposure, and sensitivity, Precious Marble highlights regions at risk, providing timely and actionable insights into the changing vulnerability status.

*Press contact:*

Alexander Epp

[alex@marble-imaging.de](mailto:alex@marble-imaging.de)

For more information: <https://www.marble-imaging.de>

*This project is funded by:*



**Co-funded by  
the European Union**