

PRESS RELEASE

Full Speed Ahead: Marble Imaging GmbH Is Now Marble Imaging AG and Welcomes Its First Investors



The growing Marble-Team in April 2024

The Bremen based NewSpace company Marble Imaging has completed its transition to a public limited company (AG) and welcomes its first investors.

- Marble Imaging AG transition finalized, Supervisory Board appointed
- Pre-Seed funding round of 650,000 Euros successfully completed

06/05/2024

Bremen, Germany – [Marble Imaging](#) is advancing rapidly. The company has transitioned from a GmbH to a public limited company (AG) and appointed Dr. Ana Fernandez del Rio, a leading data scientist at Causal Foundry, and Dr. Rüdiger Schönfeld, Director of Earth Observation at OHB, a prominent aerospace and technology company, to its supervisory board. As a distinguished economist who has previously held board positions at various major corporations and numerous supervisory boards, Peter Biewald will serve as the chairman.

Peter Biewald: "I am really proud to get the opportunity to support this excellent team on its way to the stars. I am confident, together we will become the leading European player in our market."

Additionally, Marble welcomes its Pre-Seed investors led by Thomas Künzle, who have invested 650,000 Euros in the NewSpace company. The funds are designated for company expansion, the development of data analytic products, and the design of the first satellite prototype in collaboration with the Polish payload manufacturer Scanway.

Thomas Künzle, Partner and CEO of Belesta AG: "We believe in Marble's team and vision and we see passion, determination and knowledge. Good work combined with patience will pay off."

Marble Imaging has made a significant stride toward its goal of developing the first commercial European small satellite constellation for daily very-high resolution Earth Observation to strengthen Europe's independence in the EO sector. Over the next decade, the company aims to put up to 200 small satellites into space, mapping the planet daily with a very high resolution of 80 centimeter ground sampling distance. Future satellites are set to capture data across eight channels in total, three of those are planned to be in the short-wave infrared range with a resolution higher than 10 meters, aiming for compatibility with Sentinel-2 data from the European Copernicus Mission.

Simultaneously, the company currently offers advanced analytical products derived from already existing satellite data, which it continues to refine and plans to make accessible via a user-friendly web portal which is also in development. These analyses focus on quantifying environmental vulnerability by identifying and monitoring contributing factors in various areas including marine ecosystems, agriculture, infrastructure, land and forests, and coasts, among others.

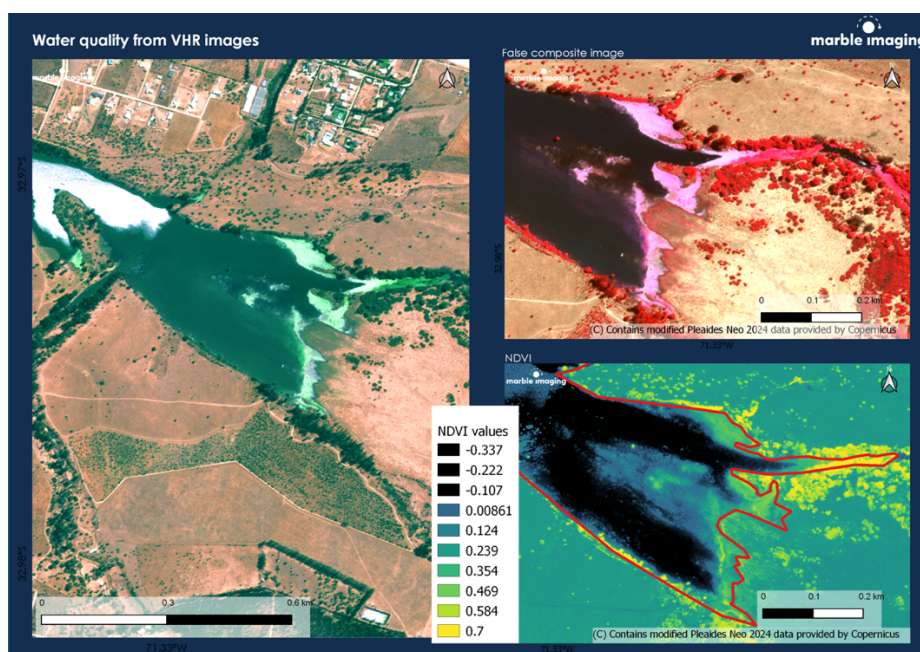


Fig. 1: Water Quality Analysis by Marble Imaging

"We are proud to have reached this point so quickly and are grateful for the trust placed in us by the German Aerospace Center DLR and ESA, as well as by our investors," says Robert Hook, CEO of Marble Imaging.

"The integration of Earth Observation data into scalable analytical products is the future", Dr. Gopika Suresh, Marble's Chief Strategy Officer adds. "We have many ideas on how to make complex data understandable and accessible to a wide range of users, and we are working tirelessly to continue advancing in this direction."

Marble Imaging AG

Marble Imaging, founded in August 2023 in Bremen, aims to disrupt the Earth Observation (EO) market and plans to strengthen the European NewSpace sector by developing its own constellation of small EO-satellites. With a shared background covering the entire spectrum from mission design and management, data processing, and extensive EO data usage, the company deeply comprehends the value of global data for real-world applications and the shortcomings in the existing market.

<https://marble-imaging.de/>

Marble Imaging AG - Press Contact

Alexander Epp

alex@marble-imaging.de

+491751607902